



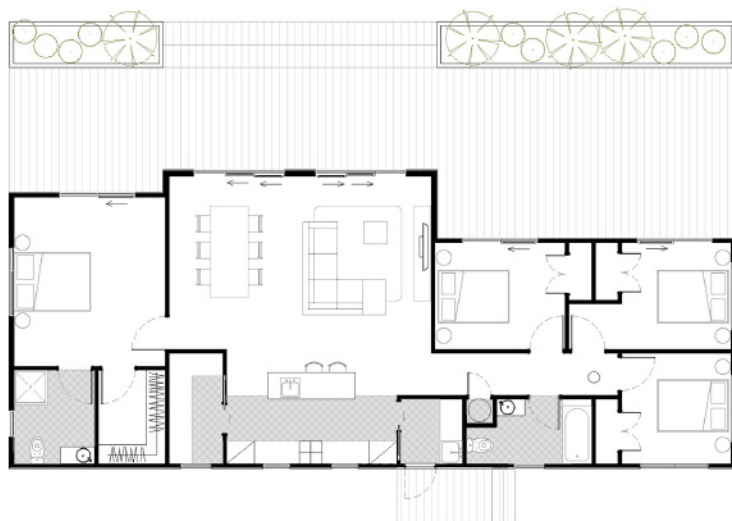
## 4 Bedroom Lux Plus

 132.25 sqm

 4 Bedrooms

 2 Bathrooms

Great Size House with Open Plan Living & Dining with sliders across the entire front allowing room for an outdoor decking area. Separate Master on one end of the house and 3 bedrooms on the other as well as 2 bathrooms. Option to switch shower over bath to shower.



Area: 132.25 sqm

### Kitchen

Open plan kitchen gives plenty of useable surface area.

### Modern Appliances

Our homes come complete with Induction hob, oven, range hood, waste disposal unit & dishwasher.

### Bathroom convenience

The modern and spacious bathroom design allows owners to enjoy both the main bathroom and en suite (if any).

### Storage Options

Great storage areas as well as option to add more.

### Heat Pump

Heat Pumps can be arranged/included as an upgrade.



### Deck Area

Our homes are designed to allow great decking/outdoor areas - Decking not included - to be arranged onsite by client

*\* Includes transport, insurances, consents & standard piling (subject to site inspection & zoning)*

*Standard construction includes linear weatherboard & Colorsteel roof. Full insulation & double glazing. All packages come complete with stainless steel under bench oven, electric hob, canopy range hood, dishwasher, fixed floor coverings with painted interior & exterior wall finish. Standard specifications can be viewed at Presidential Homes Show Home/Factory.*