



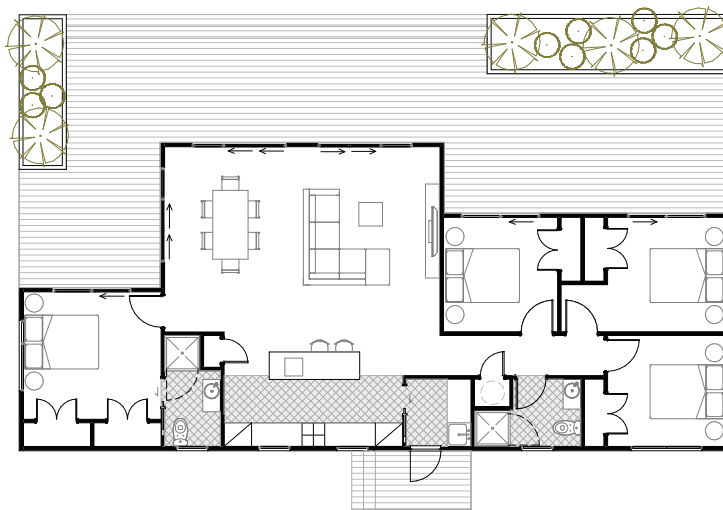
4 Bedroom Lux

 **4 Bedrooms**

 **Living & Dining**

 **2 Bathrooms**

Wanting a bit more Shape? This 4 bedroom plan has fantastic appeal to the eye from inside and out, with sliders across the entire front allowing ample room for an outdoor decking area. Separate Master on one end of the house and 3 bedrooms on the other as well as 2 bathrooms perfect for those wanting the separation.



Area: 114.30 sqm



Deck Area

Our homes are designed to allow great decking/outdoor areas - Decking not included - to be arranged onsite by client



Kitchen

Open plan kitchen gives plenty of useable surface area.



Modern Appliances

Our homes come complete with Induction hob, oven, range hood, waste disposal unit & dishwasher.



Bathroom convenience

The modern and spacious bathroom design enables owners to enjoy both the main bathroom and en suite (if any).



Storage Options

Great storage areas as well as option to add more.



Heat Pump

Heat Pumps can be arranged/included as an upgrade.

** Includes transport, insurances, consents & standard piling (subject to site inspection & zoning)*

Standard construction includes linear weatherboard & Colorsteel roof. Full insulation & double glazing. All packages come complete with stainless steel under bench oven, electric hob, canopy range hood, dishwasher, fixed floor coverings with painted interior & exterior wall finish. Standard specifications can be viewed at Presidential Homes Show Home/Factory.