



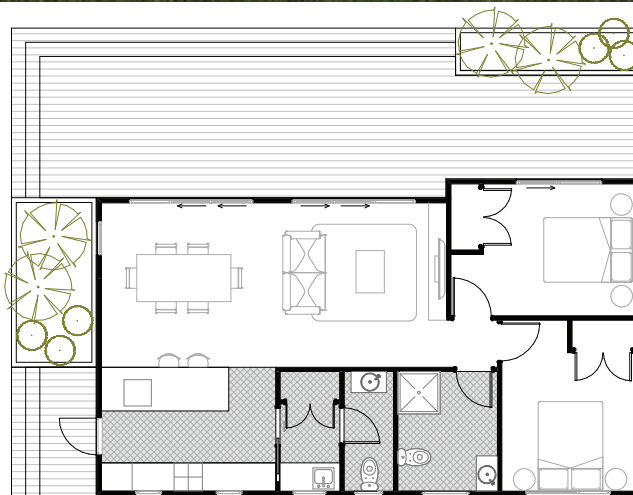
2 Bedroom Plus

 **2 Bedrooms**

 **Living & Dining**

 **2 Bathrooms**

A great size Home with Large Master and great size secondary bedroom. This Home is a stretched Variation of the 2 Bedroom allowing an extra separate toilet, larger kitchen increasing that living area to allow that extra bit of space.



Area: 74 sqm



Deck Area

Our homes are designed to allow great decking/outdoor areas - Decking not included - to be arranged onsite by client



Kitchen

Open plan kitchen gives plenty of useable surface area.



Modern Appliances

Our homes come complete with Induction hob, oven, range hood, waste disposal unit & dishwasher.



Bathroom convenience

The modern and spacious bathroom design ables owners to enjoy both the main bathroom and en suite (if any).



Storage Options

Great storage areas as well as option to add more.



Heat Pump

Heat Pumps can be arranged/included as an upgrade.

* Includes transport, insurances, consents & standard piling (subject to site inspection & zoning)

Standard construction includes linear weatherboard & Colorsteel roof. Full insulation & double glazing. All packages come complete with stainless steel under bench oven, electric hob, canopy range hood, dishwasher, fixed floor coverings with painted interior & exterior wall finish. Standard specifications can be viewed at Presidential Homes Show Home/Factory.